

»»» **HARDIN COUNTY EXTENSION FCS NEWSLETTER** «««

THE HAPPY, HEALTHY

Hardin County Extension *Homemaker*



**FALL BAZAAR
NOVEMBER 9, 2024!**



Hardin County Extension Homemaker President



Cherie Mingus receives recognition

Retired HCS teacher to be honored at UK
A longtime Hardin County Schools teacher will be one of three women inducted this week into the University of Kentucky School of Human Environmental Sciences Hall of Fame.

NEWSLETTER NEED TO KNOWS: «««

The Hardin County Extension Office is offering a Master Gardener class January through March 2025. For more information or an application contact the office at 270-765-4121.

October 28 is Trunk or Treat - If you have grandchildren or if your club wants to set up please let us know

Next HM Council Meeting is Nov.6th

»»» AREA KEHA

AREA ANNUAL MEETING

Friday October 25, 2024

at the Marion County Extension Office

See you there!



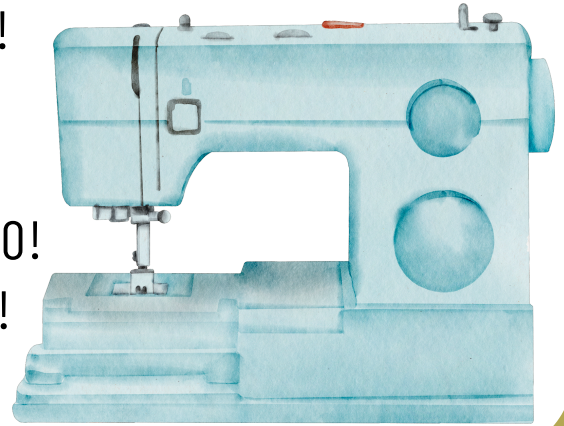
Dayna Fentress
Hardin County FCS Agent

Sleep in Your Bed Quilting or Sewing Retreat

OCTOBER 31, NOVEMBER 1, NOVEMBER 2, NOVEMBER 3

9 :00 AM - 9:00 PM EACH DAY

COST: ONE NON-PERISHABLE FOOD ITEM FOR EACH DAY FOR THE BLESSING BOX
BRING ANY PROJECT YOU ARE WORKING ON!
CAN BE QUILTING OR SEWING! COME ENJOY
A FEW DAYS WITH LIKE MINDED FRIENDS
WHO ARE WORKING ON THEIR PROJECTS TOO!
BUT THEN **SLEEP IN YOUR BED** EACH NIGHT!



Caregiver Support Group

OCTOBER 23

NOVEMBER 20

DECEMBER 18

EACH MEETING IS FROM

1:00 - 3:00 PM

A SPEAKER STARTS THE

MEETING EACH MONTH

WITH THE SECOND HOUR

FOR SHARING OF

EXPERIENCES!



Golden Years WAS ANOTHER HUGE SUCCESS!



THANK YOU TO OUR SPONSOR
ENCOMPASS HEALTH!



THANK YOU TO REGINA AND THE COMMITTEE



*This conference was
hosted in honor of
Mavis Hart.*
MOTHER OF REGINA GOODMAN
JUNE 8, 1935 - OCTOBER 10, 2021



BIKES AND TRIKES

10:00 AM - 12:00 PM

>>> OCTOBER 8

Bring your kids or grandkids for a fun morning at the office. Bring their bikes AND helmets!



LESSON LEADER TRAININGS:

OCTOBER 21

HEALTHY HOLIDAY MEALS
10:00 AM AT OUR OFFICE

NOVEMBER 19

QUILTED STAR ORNAMENT
1:30 PM IN LARUE COUNTY

JANUARY 22

GRANDCHILDREN - GRAND COOKS
10:30 AM AT OUR OFFICE

HOMEMAKER LESSONS ARE OPEN TO THE PUBLIC

WALKTOBER

FREE TO REGISTER (CALL THE OFFICE)

KEEP TRACK OF STEPS DURING MONTH OF OCTOBER

>>> TURN IN ON OCTOBER 31 AT THE DRIVE THRU PARTY OR ONLINE!

COOKING THROUGH THE CALENDAR

LAST MONDAY OF EVERY MONTH AT 1:00 P.M.
AT THE HARDIN COUNTY PUBLIC LIBRARY

**>>> OCTOBER 28
NOVEMBER 25
DECEMBER 16****



NEW!! 4-H TREASURES CLUB

AGES 9-18 - FREE TO ENROLL

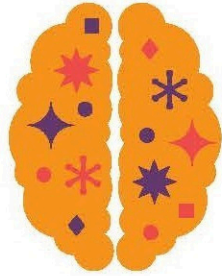
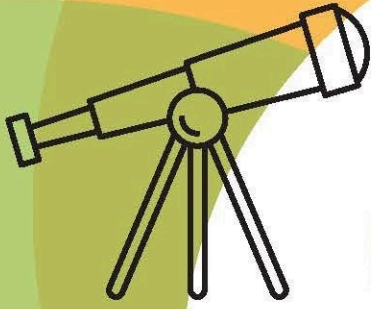
MEETING TIME: 5:30 P.M.

FOR MORE INFORMATION AND
TO REGISTER CALL 270-765-4121



Fall Back

SET YOUR CLOCKS
BACK ONE HOUR
SUNDAY, NOVEMBER 3



WITS WORKOUT



An engaging, interactive,
and educational
brain health program

*Work out your brain.
Age healthy.*

Hardin County Cooperative Extension presents

WITS WORKOUT

at the Hardin County Public Library
3:00 pm on these Mondays
in November and December:

November 4, 18 and 25

December 2, 9, and 16

at 3:00 pm

at the Hardin County Public Library

100 Jim Owen Drive, Elizabethtown



COLLEGE OF AGRICULTURAL, CONSUMER
& ENVIRONMENTAL SCIENCES

Cooperative Extension Service

Agriculture and Natural Resources
Family and Consumer Sciences
4-H Youth Development
Community and Economic Development

Educational programs of Kentucky Cooperative Extension serve all people regardless of economic or social status and will not discriminate on the basis of race, color, ethnic origin, national origin, creed, religion, political belief, sex, sexual orientation, gender identity, gender expression, pregnancy, marital status, genetic information, age, veteran status, physical or mental disability or reprisal or retaliation for prior civil rights activity. Reasonable accommodation of disability may be available with prior notice. Program information may be made available in languages other than English. University of Kentucky, Kentucky State University, U.S. Department of Agriculture, and Kentucky Counties, Cooperating. Lexington, KY 40506



Disabilities
accommodated
with prior notification.

Hardin County Extension Homemakers Year at a Glance

	SEP	OCT	NOV	DEC	JAN	FEB	MAR	APR	MAY	JUNE	JULY	AUG
01					OFFICE CLOSED		STATE CONTESTS DUE		COUNTY SCHOLARSHIP DUE			
02	LABOR DAY			PRSDNTS LNCH WITS WORKOUT								
03		COUNTY DIRECTOR INTERVIEWS				AREA CNCL MTG						
04			WITS WORKOUT	LATE DUES DUE		COUNCIL MTG INTRNTNL DAY						
05												AREA CNCL MTG
06			COUNTY CNCL MEETING						KEHA STATE MEETING		COUNTY FAIR ENTRY DAY	COUNTY CNCL MTG
07									HYATT REGENCY		COUNTY FAIR ENTRY DAY	
08									LEXINGTON		COUNTY FAIR JUDGING	
09		BIKES AND TRIKES	HOLIDAY BAZAAR!!	WITS WORKOUT								
10												
11	COUNTY ANNUAL MEETING	RSVP DEADLINE FOR AREA ANNUAL MEETING	WITS WORKOUT			AREA COUNCIL MEETING SNOW DATE						
12												
13		KEHA WEEK									COUNTY FAIR PICK UP DAY	
14		KEHA WEEK										
15		KEHA WEEK	DUES DEADLINE!				SPRING BAZAAR!!					REPORTS DUE ONLINE
16		KEHA WEEK		WITS WORKOUT								
17		KEHA WEEK										
18		KEHA WEEK	WITS WORKOUT									
19		POP CLUB	LNSN LDR TRNG									
20	STITCHERS QUILT SHOW				OFFICE CLOSED							
21	STITCHERS QUILT SHOW	LESSON LEADER TRAINING						LSN LDR TRNG				
22		COUNTY CULTURAL ARTS CONTEST			LSN LDR TRNG							
23												
24	LSN LEADER TRAINING	AREA CULTURAL ARTS CONTEST										
25	GOLDENYEARS	ANNUAL MTG	WITS WORKOUT	OFFICE CLOSED								
26				OFFICE CLOSED		LSN LDR TRNG						
27				OFFICE CLOSED								
28	POP CLUB	TRUNK OR TREAT	OFFICE CLOSED	OFFICE CLOSED								
29			OFFICE CLOSED	OFFICE CLOSED								
30	COOKING THRU THE CAL			OFFICE CLOSED								
31				OFFICE CLOSED			LSN LDR TRNG					REPORTS DUE

HARDIN COUNTY EXTENSION

HOMEMAKERS

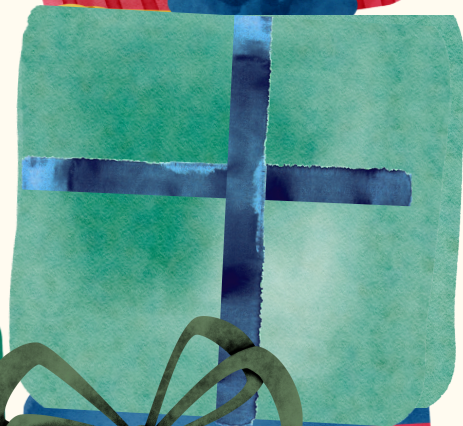
Holiday
BAZAAR

NOVEMBER 9, 2024

9:00 AM - 3:00 PM

FREE ENTRY

HARDIN COUNTY EXTENSION OFFICE
111 OPPORTUNITY WAY
ELIZABETHTOWN



**WE WILL BE
COLLECTING
SOCKS, HATS,
AND GLOVES IF
YOU'RE ABLE TO
DONATE!**



Cultural Arts Categories:

1. Sewing: a. Basic, b. Specialty, c. Accessory, d. Basic Home Decor, e. Specialty
2. Art, 3D: a. Carving, b. Sculpture
3. Art, Natural: a. Wood, b. Other
4. Art, Recycled (include a before picture): a. Clothing, b. Household, c. Other
5. Basketry: a. Cane, b. Dyed Material, c. Miniature, d. Novelty, e. Plain
6. Beading: a. Bead Weaving, b. Non-jewelry Item/Wearable, c. Misc
7. Ceramics: a. Hand-formed, b. Molded, c. Pre-Made
8. Counted Cross Stitch: a. 14 Count and under, b. 16-22 Count
9. Crochet: a. Accessories, b. Fashion, c. Home Decor and Afghans, d. Thread
10. Doll/Toy Making: a. Cloth, b. Handmade other c. Porcelain/China
11. Drawing: a. Pastels, b. Pen + Ink, c. Pen + Ink with Oil Roughing, d. Pencil/Charcoal - Black, e. Pencil - Color
12. Embroidery: a. Basic, b. Candle Wicking, c. Crewel, d. Machine, e. Ribbon, f. Smocking, g. Swedish, h. Tatting/Lace Making, i. Chicken Scratch, j. Punch Needle (under 60"), k. Misc
13. Felting: a. Needle Method, b. Wet Method
14. Holiday Decorations: a. Autumn, b. Spring, c. Summer, d. Winter
15. Jewelry: a. Beaded, b. Mixed Media, c. Original Design
16. Knitting (Hand): a. Accessories, b. Fashion, c. Home Decor + Afghans
17. Knitting (Other - loom made)
18. Needlepoint: a. Cloth Canvas, b. Plastic
19. Painting, Art: a. Acrylic, b. Oil, c. Watercolor
20. Painting, Decorative: a. Metal, b. Wood, c. Other
21. Photography: a. Black and White, b. Color
22. Quilts: a. Baby or Lap (hand quilted), b. Baby or Lap (machine quilted), c. Hand Applique (hand quilted), d. Hand Pieced (hand quilted), e. Machine Applique (machine quilted) f. Machine Pieced (hand quilted) g. Machine Pieced (machine quilted), h. Novelty (hand quilted), i. Novelty (machine quilted), j. Technology Based (hand or machine quilted), k. Misc (hand or machine quilted)
23. Paper Crafting: a. Card Making, b. Origami, c. Quilling, d. Scrapbooking
24. Rug Making: a. Braided, b. Hooked, c. Punch Needle (over 60") d. Woven
25. Wall or Door Hanging: a. Fabric, b. Other, c. Diamond Art Mosaic
26. Weaving: a. Hand (macrame, caning), b. Loom (includes pin weaving)
27. Misc. (Items not included in any other category)



**CULTURAL ARTS CONTEST:
OCTOBER 22 AT 9:00 AM**